



Ornament Banner 2013

40x13

Artwork from Primsy Doodles

Blocks Created by Marian Pena

In Electric Quilt 7



Isn't this a fun looking banner, whether you place it on a mantle, table, wall or anywhere else you can place, I think it looks like the little ornaments are dancing around enjoying the fun of being part of a project.

This banner includes seven applique blocks that are each based on a 6-inch block size.

Each block is added in this document separately so you can pick and choose which you want to add or make them all. It's entirely up to you.

While your ordering of your blocks can be different than mine are, the following is the order in which they are placed on the banner.

Ornament 1 = Prim Snowman

Ornament 2 = Star

Ornament 4 = Gingerbread with 3 teardrops of frosting

Ornament 3 = Gingerbread with rick rack of frosting

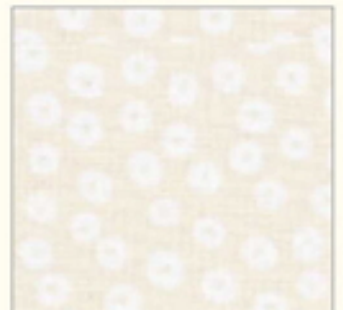
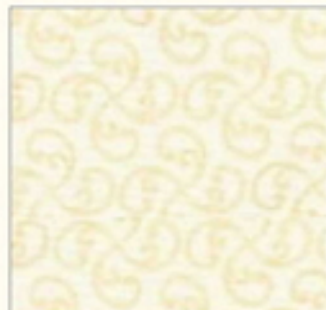
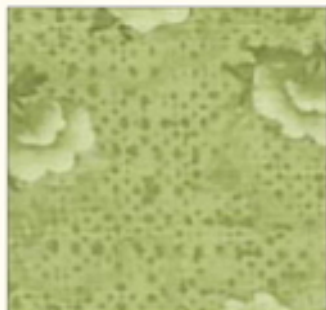
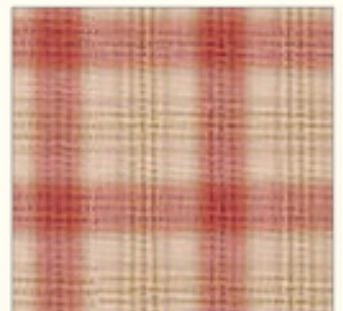
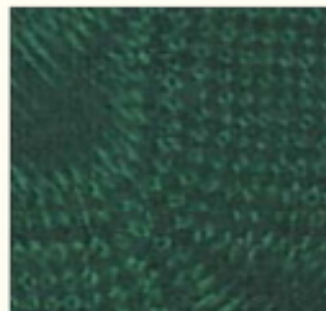
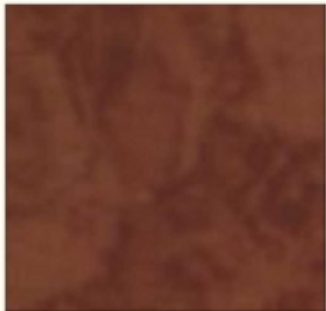
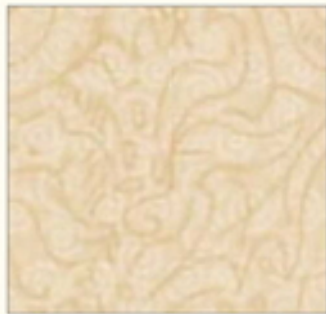
Ornament 5 = Snowman

Ornament 7 = Candy Cane Ornament

Ornament 6 = Patchwork Ornament








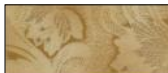






## *Fabric Colors Used*

*While I understand your not going to use these exact fabrics in this project, these will give you an idea of the fabric color choices you can use.*



# Ornament Banner 2013

## Fabric List

Fabric key	Number of patches	Yardage estimate	Fabric key	Number of patches	Yardage estimate
	5	5/8		2	# 1/4
	14	# 3/8		1	3/8
	49	1/8		4	1/8
	16	1/8		3	1/8
	6	1/8		9	1/8
	5	1/8		6	1/8
	1	1/8		1	1/8

# The estimate for this fabric assumes that long strips ARE pieced.

These are suggested colors only for this banner, but the amounts of the fabrics are estimates of what's needed. Please keep in mind that most of this project is applique, so while it may say 1/8" yd of fabric, it's going by the width it needs of one of the template shapes.

Because the borders on this banner are straight with no extra piecing to them, the amount needed is entirely dependant on what you choose to make the width of your borders at, and the amounts here are only meant as guidelines.



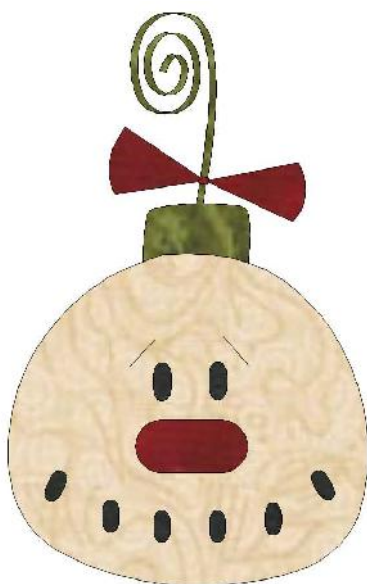
Prim Snowman 2013

Ornament 1

Size 6-inch Block

Artwork from Primsy Doodles

Block Created by Marian Pena



#### Fabrics Needed:

Scraps of black, red, green and beige and a 7 1/2-inch square background fabric

#### Shapes:

A-F and I, J are hanger shapes

G, H, and I are bow shapes

K = Snowman face

L = Nose

M thru T = Eye and Mouth

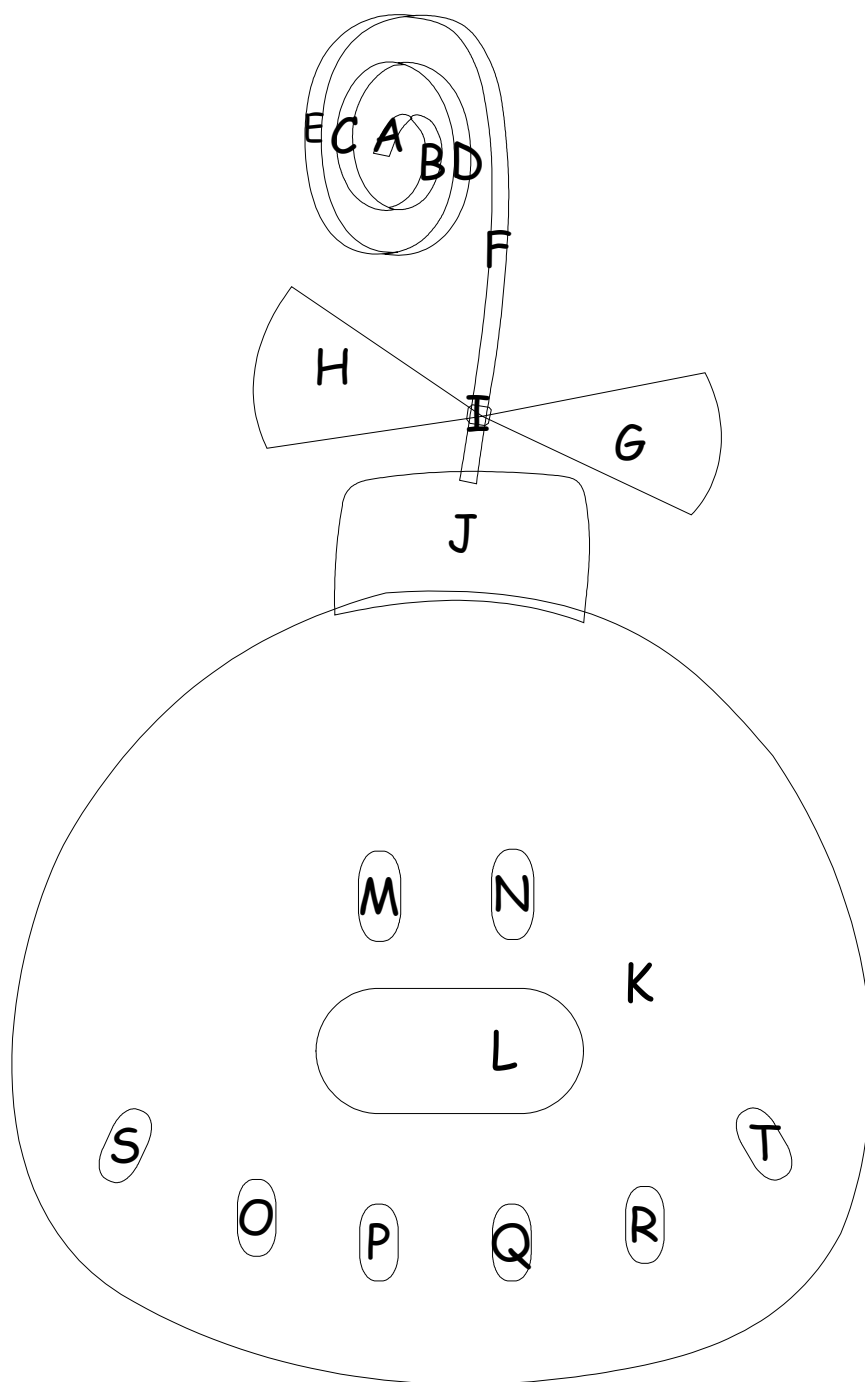
In the case of G and H only, if you place these under F, it will cut off more of the

bow than it should, so it should be placed on top of piece F. It's not a huge difference in the cut off, but the bow is suppose to have a triangular shape.

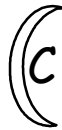
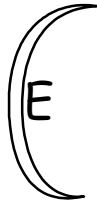
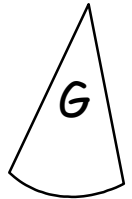
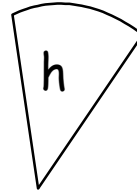
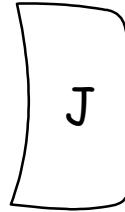
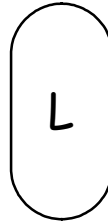
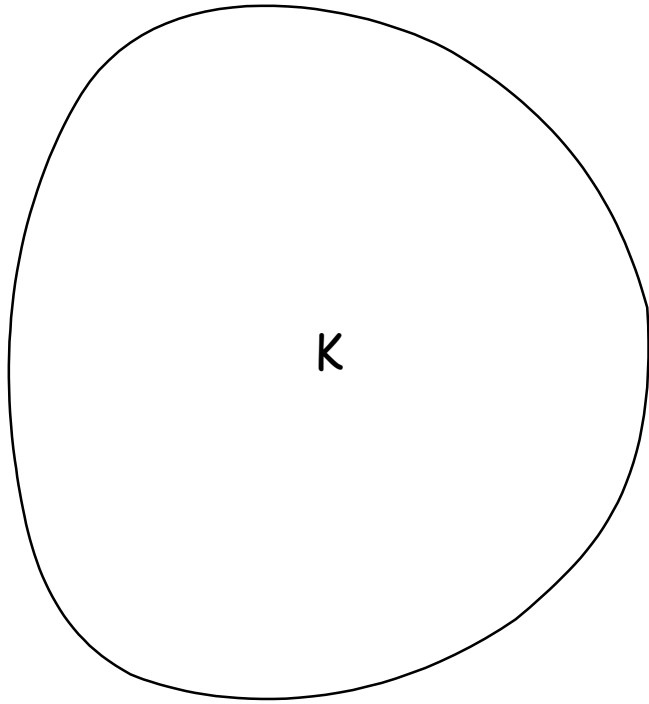
For the eyebrows, I simply did a little hand embroidery to place them on the face.

For the hanger ribbon, you can easily use the 1/8<sup>th</sup> inch satin ribbon one can buy on a roll at the store for this, it gives a more authentic effect when used in this manner and can be twisted easily as it's sewn down.

*Prim Snowman 2013*  
*Ornament 1*  
*Template Key*



*Prim Snowman 2013*  
*Ornament 1*  
*Template Shapes*





Star 2013

Ornament 2

Size 6-inch

Artwork from Primsy Doodles

Block Created by Marian Pena

In Electric Quilt 7



#### Fabrics Needed:

Scraps of yellow or gold, light and dark green, 7 1/2-inch square background fabric

#### Shapes:

A = Star

B to G and J = Hanger shapes

H, I and J are bow shapes

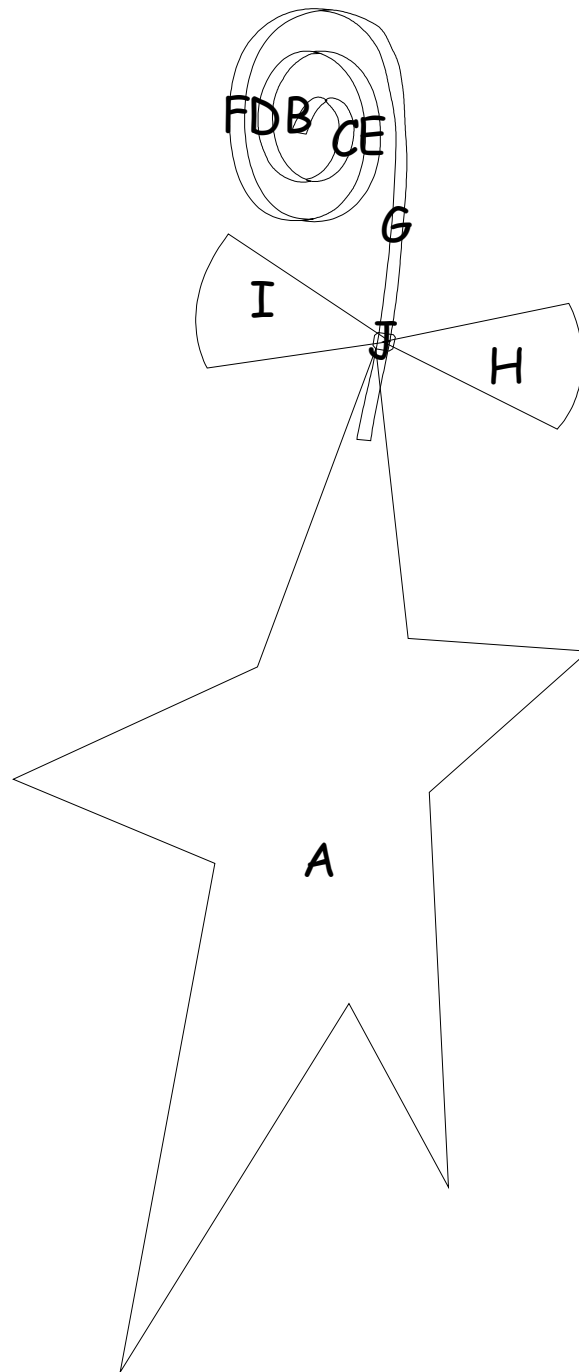
When I stitched out A, before I placed the star onto the block I made a very small

round buttonhole on the top of the star where it shows the hanger fitting into. It gave it the look that the hanger is actually inside the star area and it appears authentic to how it would look normally.

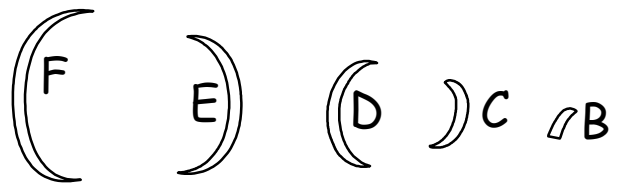
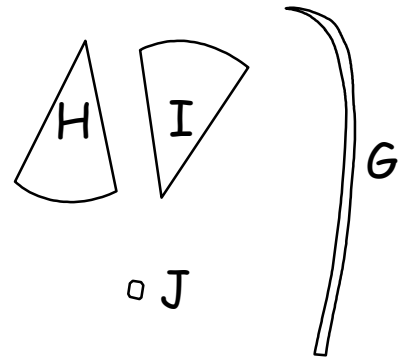
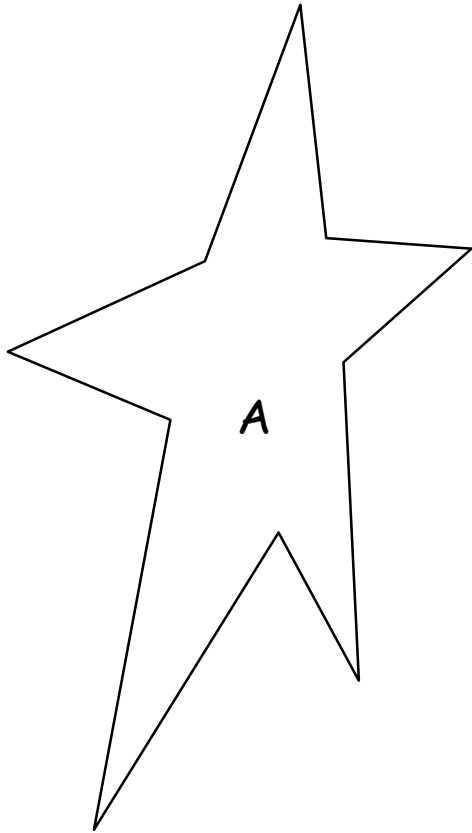
For the hanger ribbon, you can easily use the 1/8<sup>th</sup> inch satin ribbon one can buy on a roll at the store for this, it gives a more authentic effect when used in this manner and can be twisted easily as it's sewn down.

In the case of G and H only, if you place these under F, it will cut off more of the bow than it should, so it should be placed on top of piece F. It's not a huge difference in the cut off, but the bow is suppose to have a triangular shape.

*Star Ornament 2013*  
*Ornament 2*  
*Template Key*



*Star Ornament 2013*  
*Ornament 2*  
*Template Shapes*





Gingerbread 2 2013

Ornament 3

Size 6-inch

Artwork from Primsy Doodles

Block Created by Marian Pena



#### Fabrics Needed:

Scraps of dark green, beige, tan or light brown, cream, black, pink, red and a 7 1/2-inch square background fabric

#### Shapes:

A-F and I, J are hanger shapes

G, H, and I are bow shapes

K = Top of Face

L = Lower Face

M = Rickrack Icing

N, O = Pink for cheeks

P = Mouth

Q = Nose

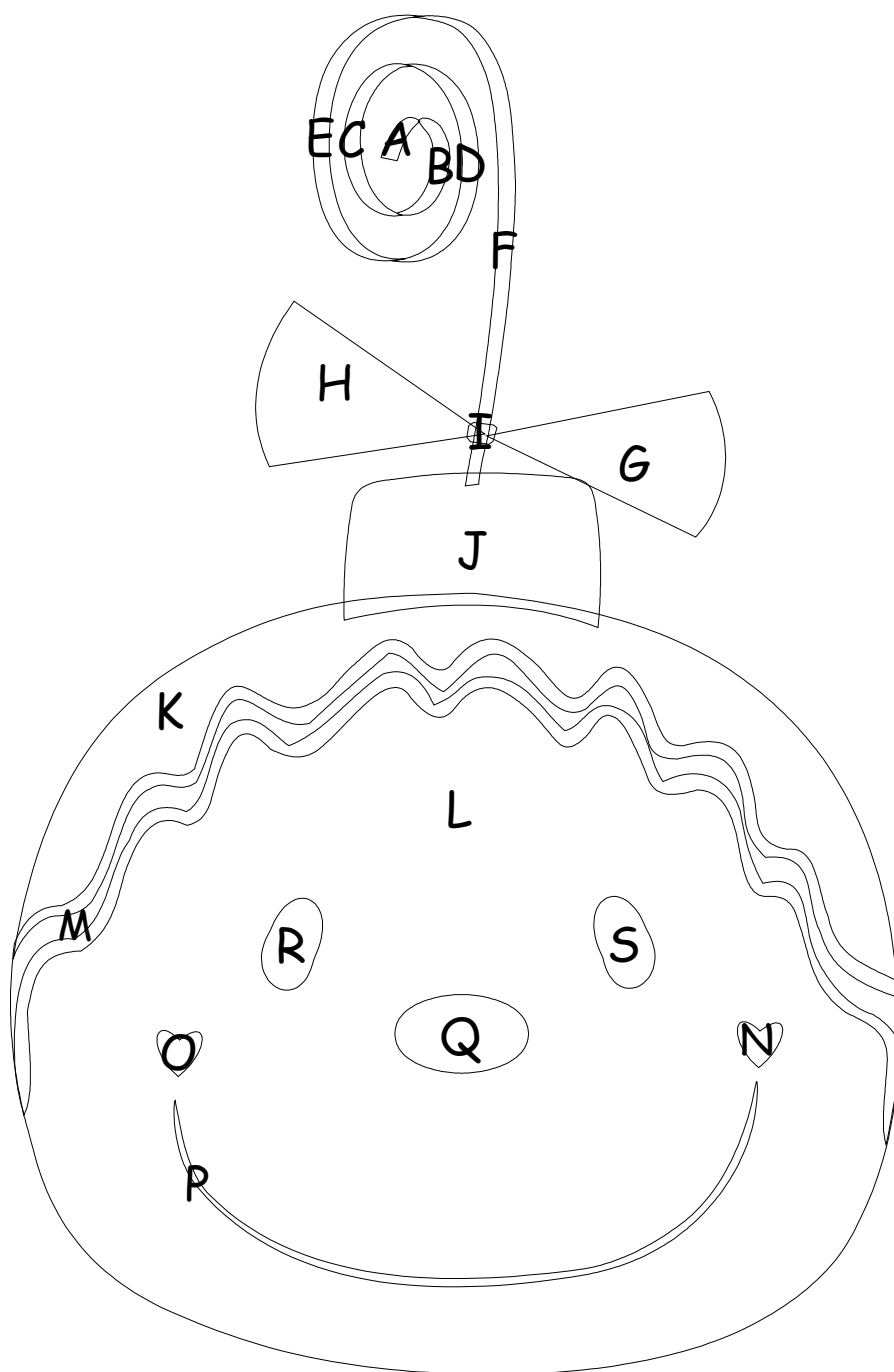
R, S = Eyes

You wouldn't need to cut a shape for shape M the icing. You can use rickrack for this instead. In shape P, I would strongly encourage you to embroider or machine zigzag stitch the mouth on. With the cheeks, instead of cutting shapes, I used some pink baby heart buttons I had.

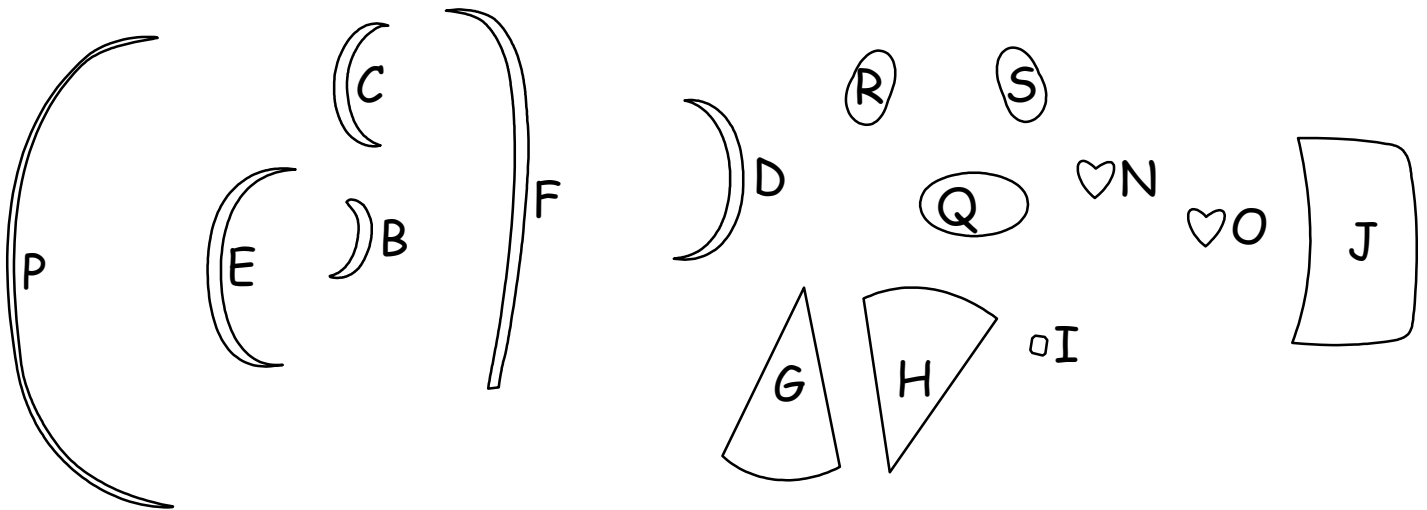
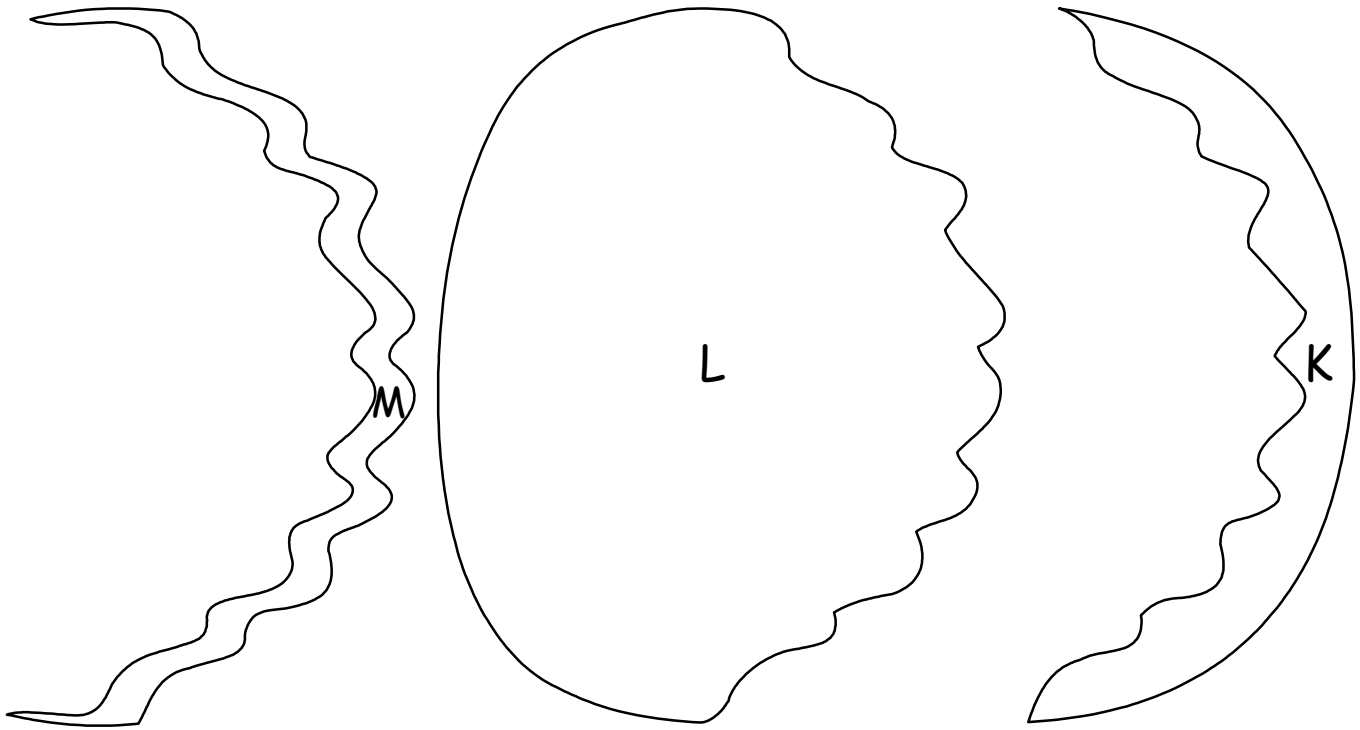
For the hanger ribbon, you can easily use the 1/8<sup>th</sup> inch satin ribbon one can buy on a roll at the store for this, it gives a more authentic effect when used in this manner and can be twisted easily as it's sewn down.

In the case of G and H only, if you place these under F, it will cut off more of the bow than it should, so it should be placed on top of piece F. It's not a huge difference in the cut off, but the bow is suppose to have a triangular shape.

*Gingerbread 2 - 2013*  
*Ornament 3*  
*Template Key*



*Gingerbread 2 - 2013*  
*Ornament 3*  
*Template Shapes*





Gingerbread 1 2013

Ornament 4

Size 6-inch

Artwork from Primsy Doodles

Block Created by Marian Pena



#### Fabrics Needed:

Scraps of dark green, beige, tan or light brown, cream, black, pink, red and a 7 1/2-inch square background fabric

#### Shapes:

A-F and I, J are hanger shapes

G, H, and I are bow shapes

K = Face

L, M, and N = Cream Frosting

O, P, T = Eyes and Mouth

Q = Nose

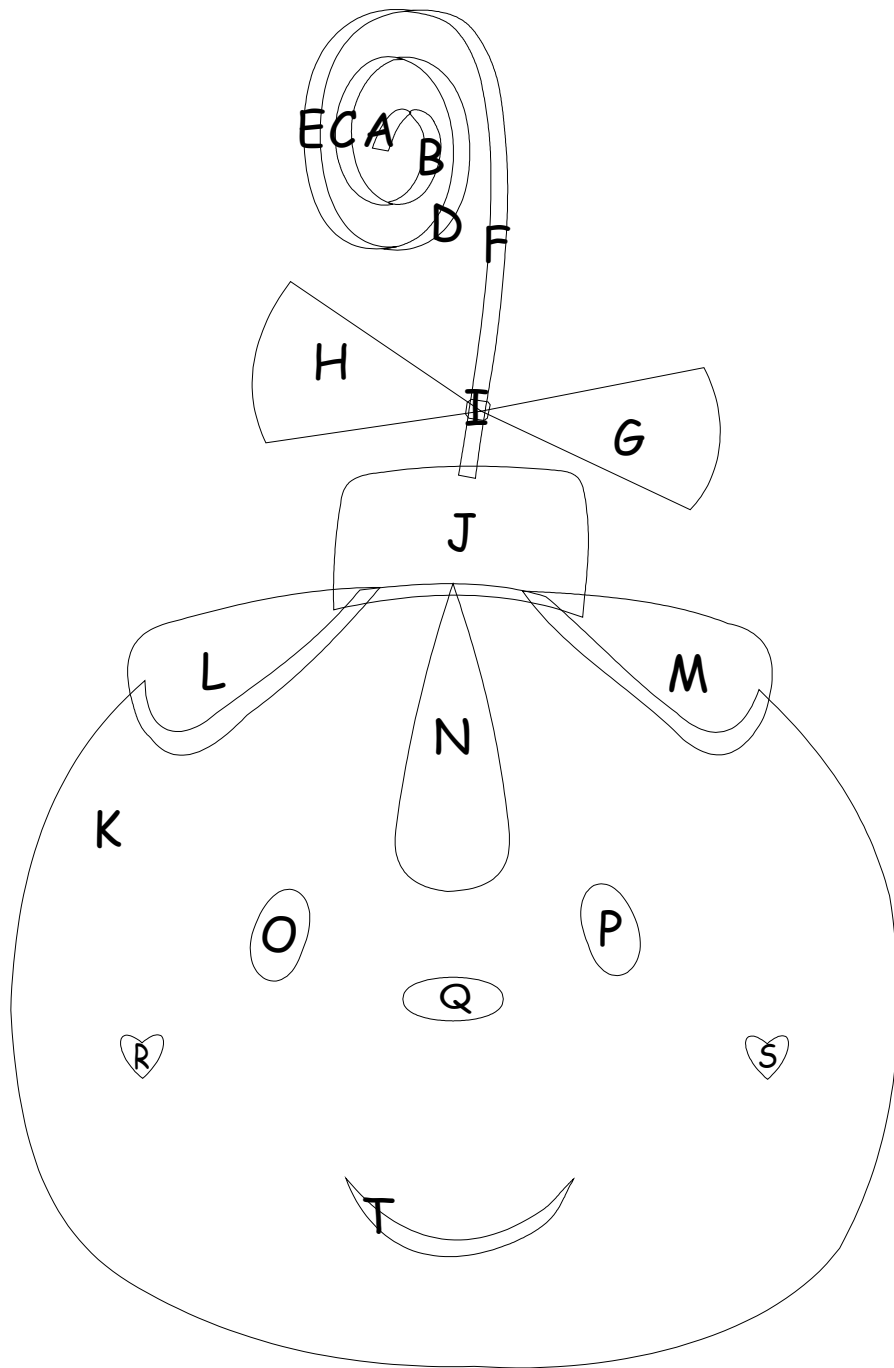
R, S = Cheeks

Because the pieces for the cheeks are really small, I used some pink baby buttons shaped like hearts which worked very well.

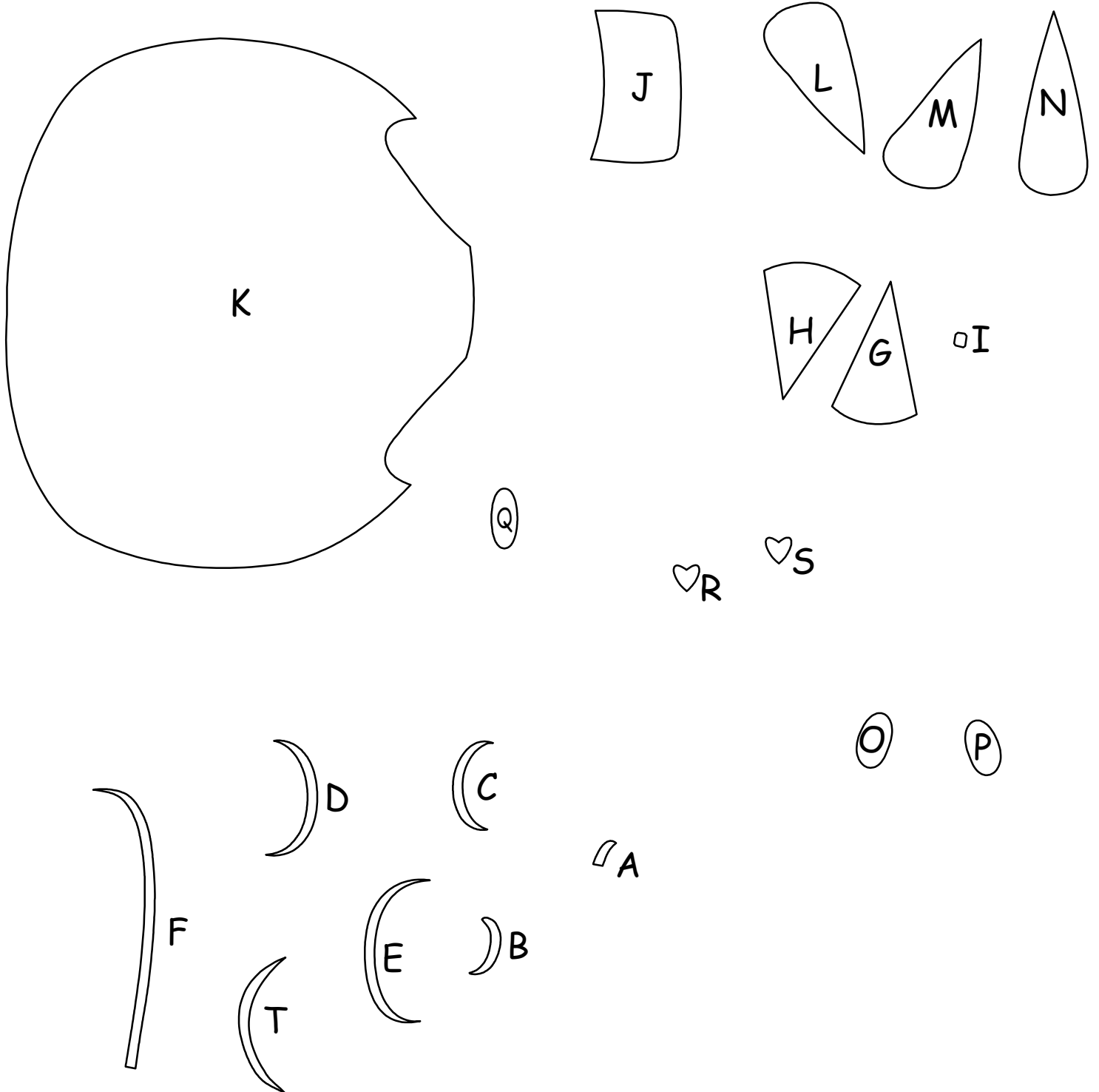
For the hanger ribbon, you can easily use the 1/8<sup>th</sup> inch satin ribbon one can buy on a roll at the store for this, it gives a more authentic effect when used in this manner and can be twisted easily as it's sewn down.

In the case of G and H only, if you place these under F, it will cut off more of the bow than it should, so it should be placed on top of piece F. It's not a huge difference in the cut off, but the bow is suppose to have a triangular shape.

*Gingerbread 1 - 2013*  
*Ornament 4*  
*Template Key*



*Gingerbread 1 - 2013*  
*Ornament 4*  
*Template Shapes*





Snowman 2013

Ornament 5

Size 6-inch

Artwork from Primsy Doodles

Block Created by Marian Pena



#### Fabrics Needed:

Scraps of cream or white, red, green, black, orange, pink and a 7 1/2-inch square background fabric

#### Shapes:

A-F and I, J are hanger shapes

G, H, and I are bow shapes

K = Face

L, M = Cheeks

N, P, and Q = Eyes and Mouth

O = Nose

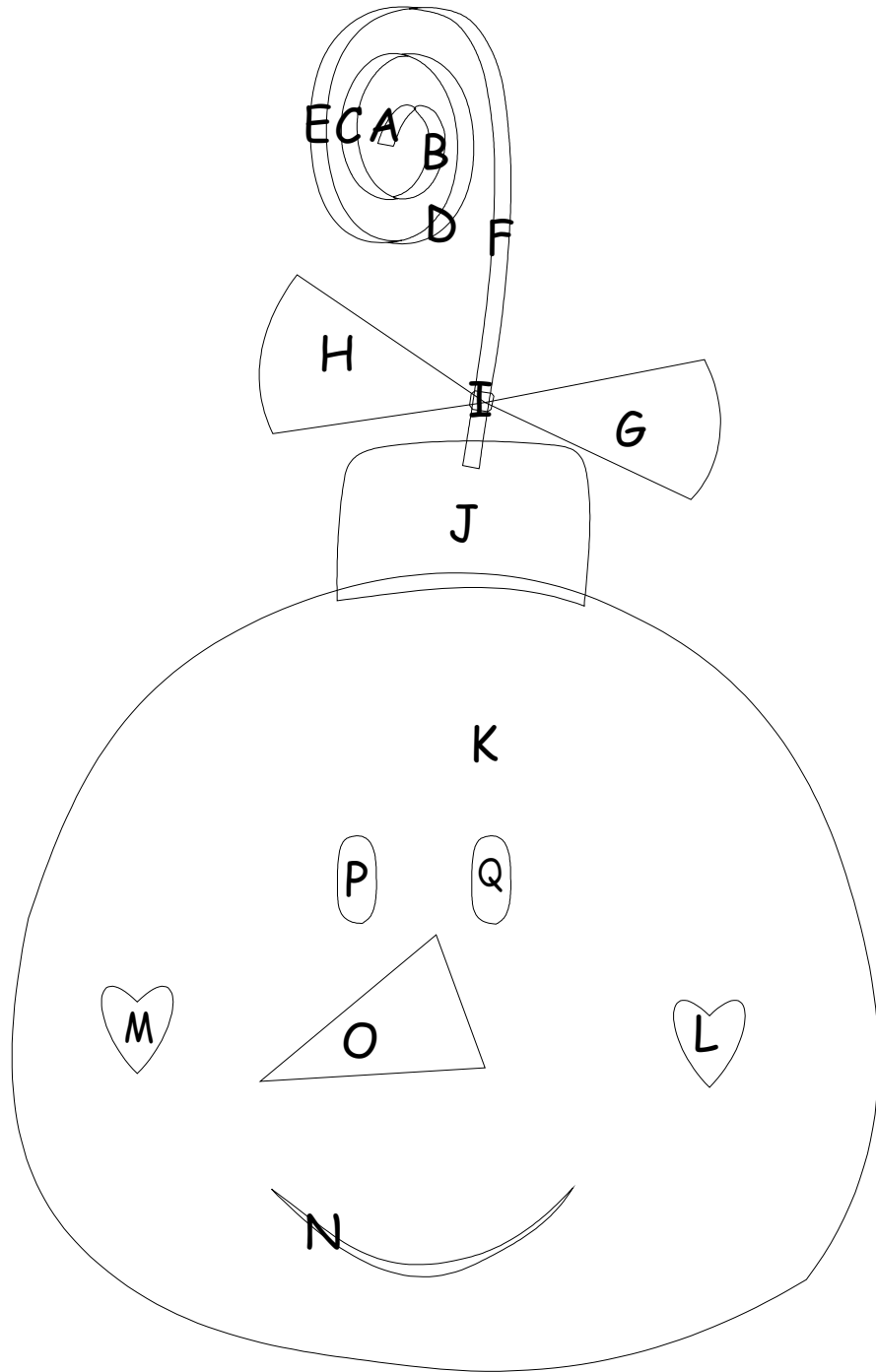
Because the pieces for the cheeks are really small, I used some pink baby buttons shaped like hearts which worked very well.

For the eyebrows, I simply did a little hand embroidery to place them on the face.

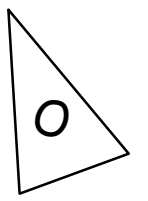
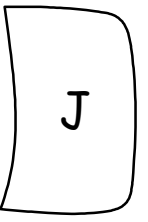
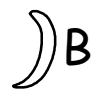
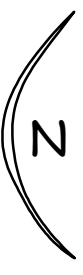
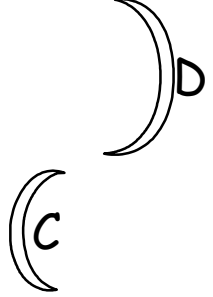
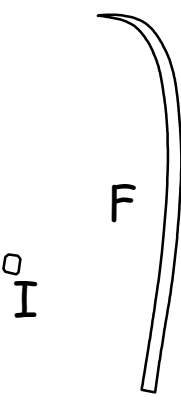
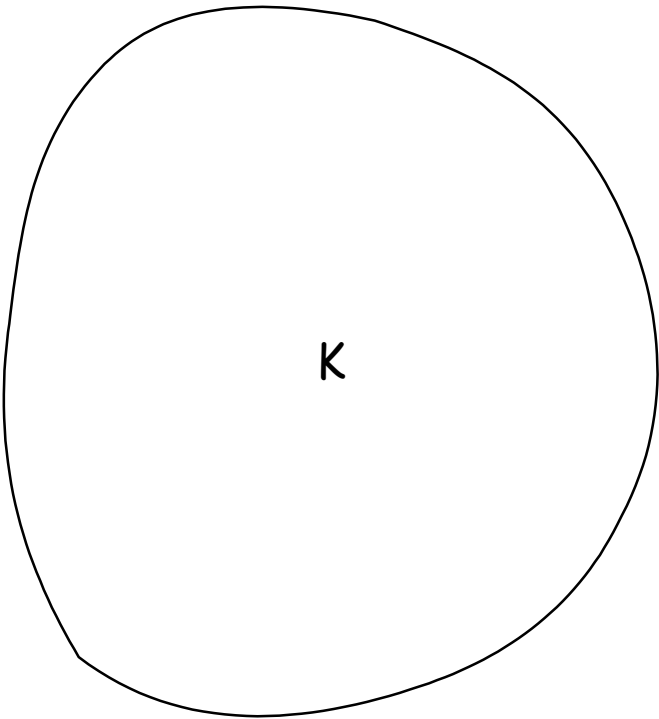
For the hanger ribbon, you can easily use the 1/8<sup>th</sup> inch satin ribbon one can buy on a roll at the store for this, it gives a more authentic effect when used in this manner and can be twisted easily as it's sewn down.

In the case of G and H only, if you place these under F, it will cut off more of the bow than it should, so it should be placed on top of piece F. It's not a huge difference in the cut off, but the bow is suppose to have a triangular shape.

*Snowman 1 - 2013*  
*Ornament 5*  
*Template Key*



*Snowman 1 - 2013*  
*Ornament 5*  
*Template Shapes*





Patchwork Ornament 2013

Ornament 6

Size 6-inch

Artwork from Primsy Doodles

Block Created by Marian Pena



#### Fabrics Needed:

Scraps of green, gold/yellow, plaids and a 7 1/2-inch square background fabric. You can use flannel for your plaids if you like. I used Homespuns in mine.

#### Shapes:

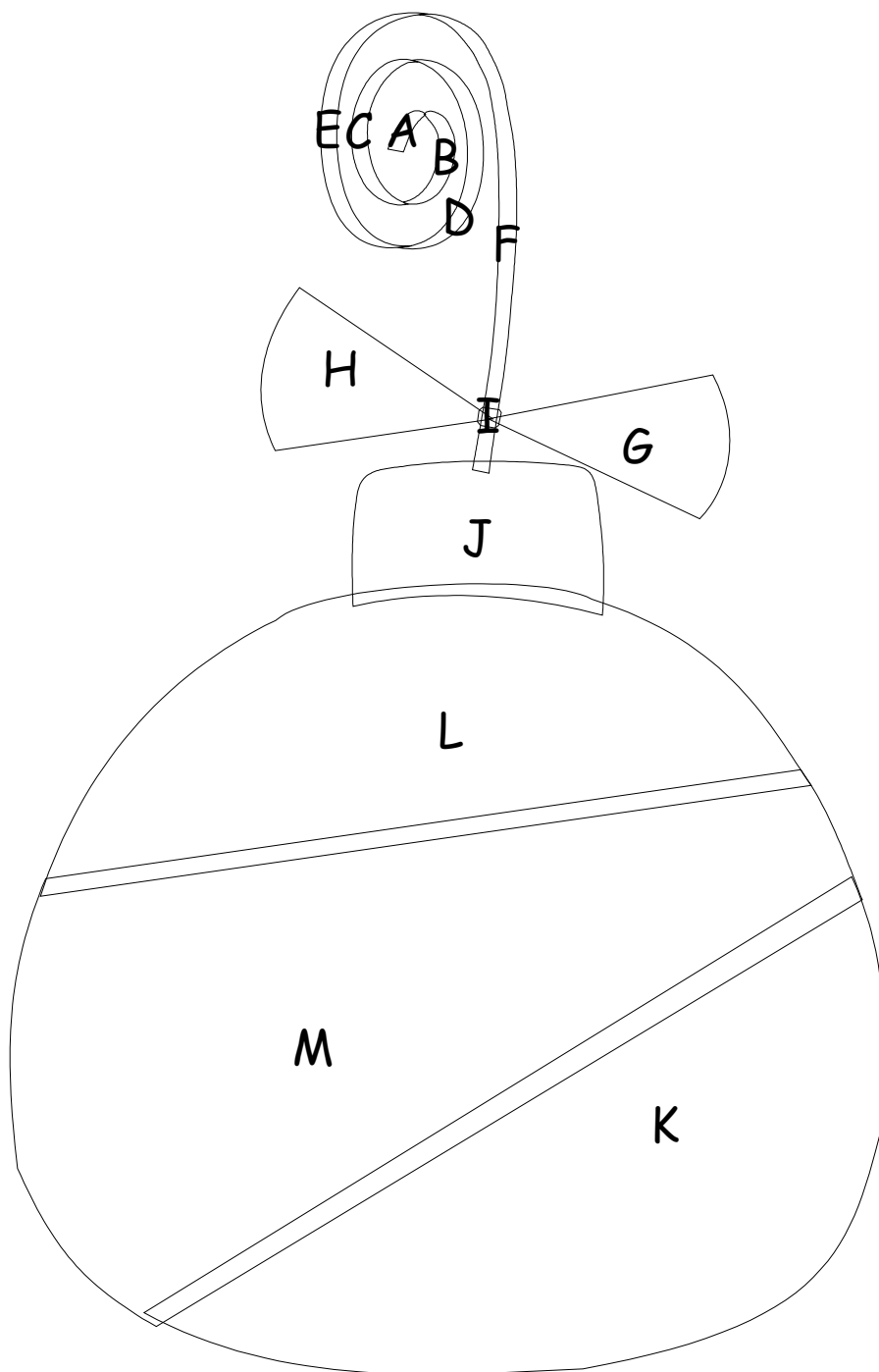
A-F and I, J are hanger shapes  
 G, H, and I are bow shapes  
 K = Bottom of Ornament  
 L = Top of Ornament  
 M = Middle of Ornament

The ornament should be stitched in the order of K, L and then M.. Or L, K, and M .. The middle is meant to be on top of the other two shapes.

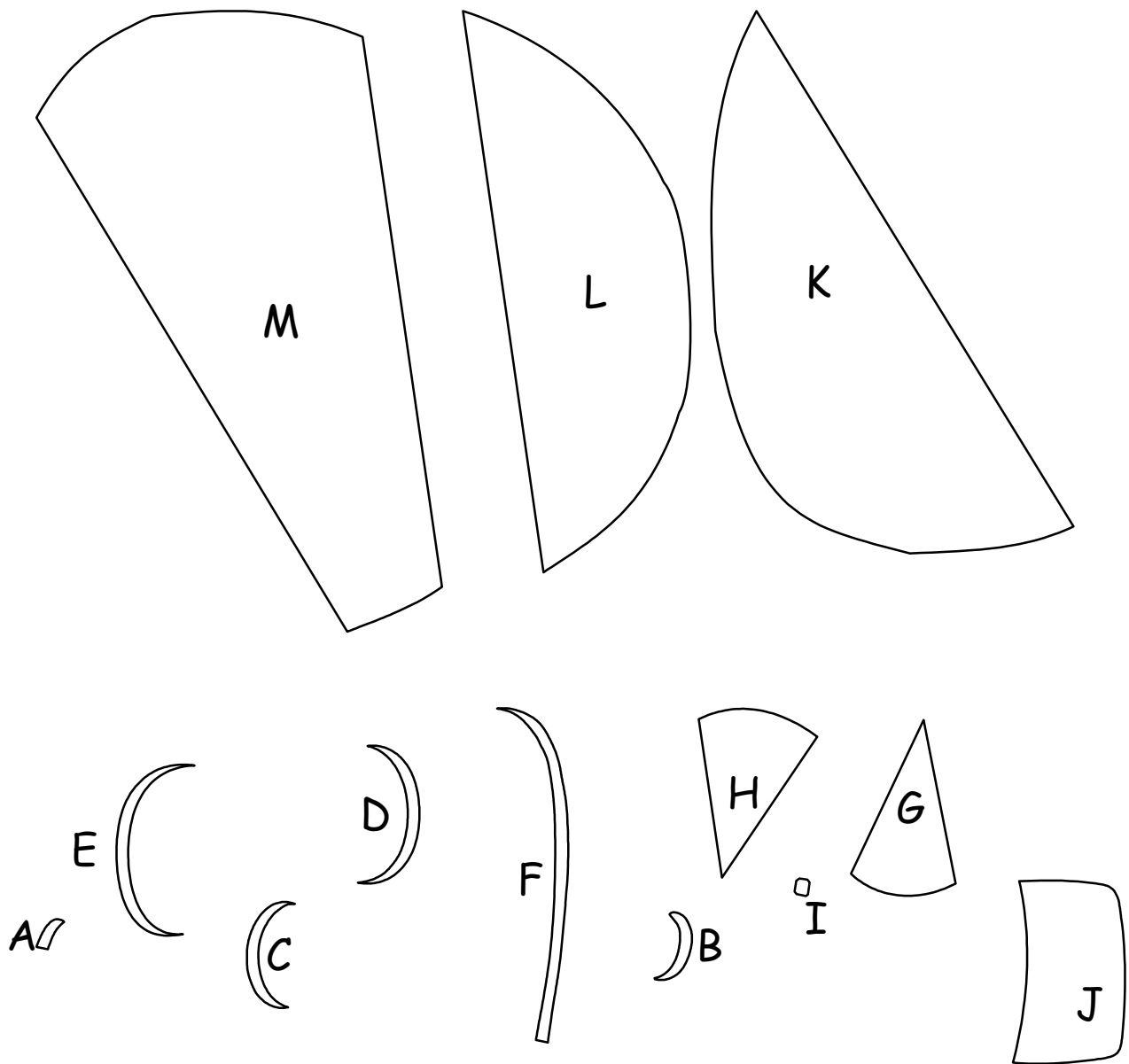
For the hanger ribbon, you can easily use the 1/8<sup>th</sup> inch satin ribbon one can buy on a roll at the store for this, it gives a more authentic effect when used in this manner and can be twisted easily as it's sewn down.

In the case of G and H only, if you place these under F, it will cut off more of the bow than it should, so it should be placed on top of piece F. It's not a huge difference in the cut off, but the bow is suppose to have a triangular shape.

*Patchwork Ornament 2013*  
*Ornament 6*  
*Template Key*



*Patchwork Ornament 2013*  
*Ornament 6*  
*Template Shapes*





Candy Cane 2013

Ornament 7

Size 6-inch Artwork from

Primsy Doodles

Block Created by Marian Pena



### **Fabrics Needed:**

Scraps of green, pink, red, white and a 7 1/2-inch square background fabric.

### **Shapes:**

A-F and I, J are hanger shapes

G, H, and I are bow shapes

K = White section of Candy Cane

L, M, N, O, P, Q = Red section of Candy Cane

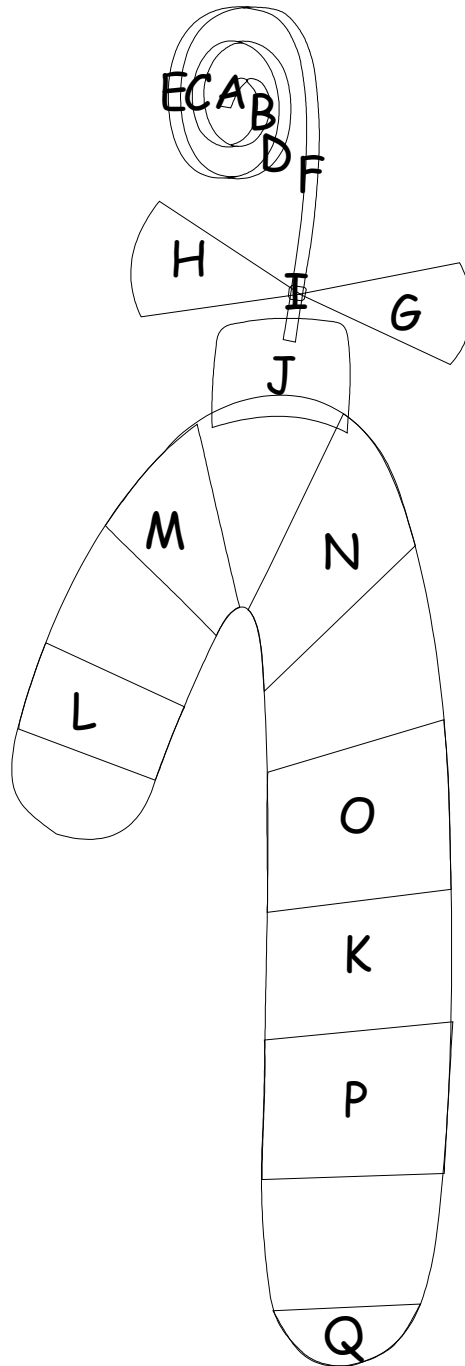
For the hanger ribbon, you can easily use the 1/8<sup>th</sup> inch satin ribbon one can buy on a roll at the store for this, it gives a more

authentic effect when used in this manner and can be twisted easily as it's sewn down.

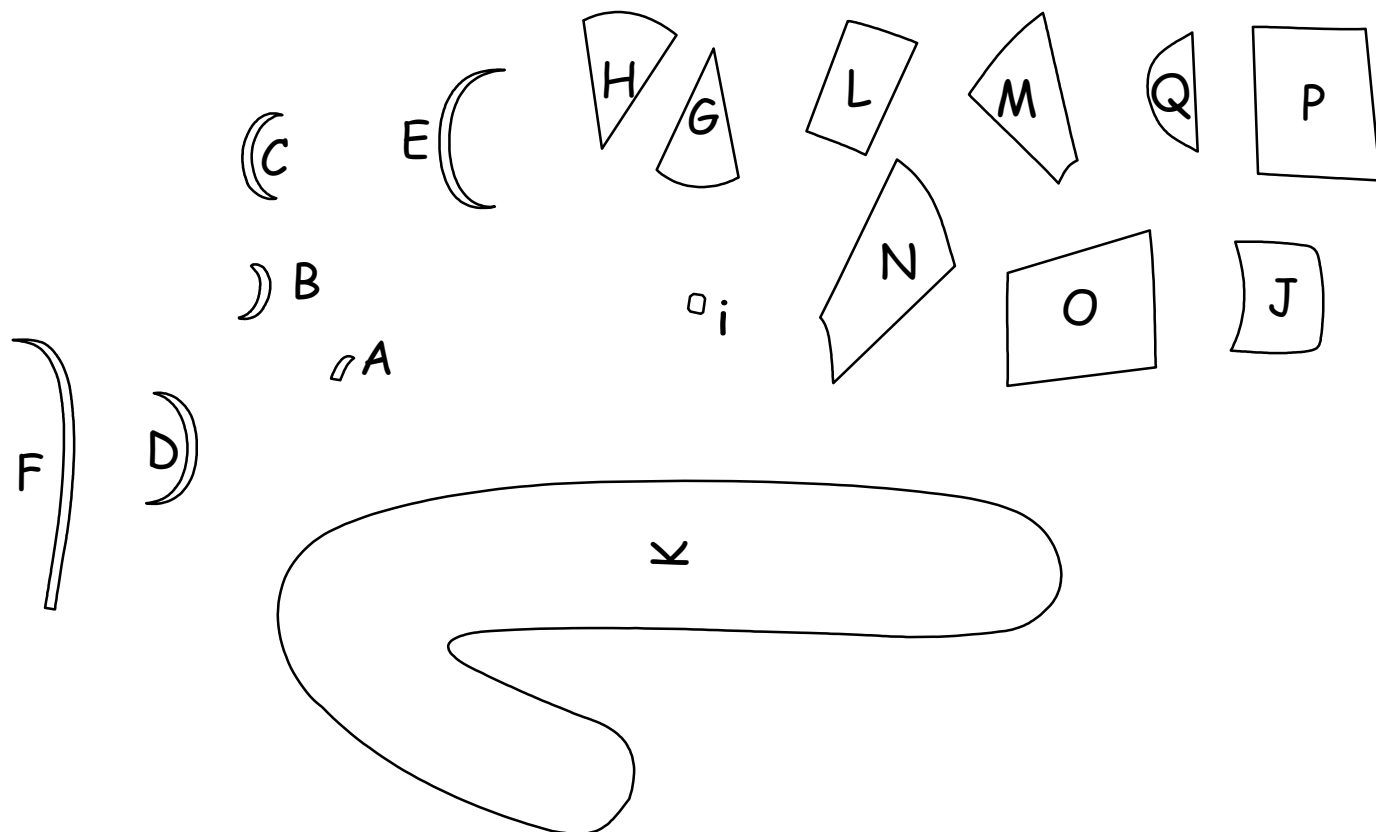
The white section of the candy cane was created as a whole piece in order to make it easier to applique. You could easily split them if you wanted to, but I found it much easier to have one piece of the white and then add the red sections to it.

In the case of G and H only, if you place these under F, it will cut off more of the bow than it should, so it should be placed on top of piece F. It's not a huge difference in the cut off, but the bow is suppose to have a triangular shape.

*Candy Cane Ornament 2013*  
*Ornament 7*  
*Template Key*



*Candy Cane Ornament 2013*  
*Ornament 7*  
*Template Shapes*



### Notes about this Pattern:

This was drawn with slight overlays, so that you'll have a bit of fabric to overlay with when necessary.

No seam allowances are added to the templates, so that you can easily cut your templates without worrying if the seam allowances are added.

It doesn't matter what your preference for applique is, whether it's hand, machine, or iron on fusible, this pattern will work with all of them.

If your not sure how to do applique techniques, here are some videos you can view on Youtube.

There are hundreds of videos on these techniques, and you may have your favorite, these are just some I have found that I thought were pretty good.

### Preparation Techniques:

She uses starch and a plastic template while I wouldn't use the template, it's pretty cool  
<http://www.youtube.com/watch?v=n5h6i8RxKuE>

### Hand Applique Techniques:

Back Basting and Simplified Needle Turn Part 1)  
<http://www.youtube.com/watch?v=jiPhNflxwd4>

Freezer Paper & Fusible Applique Part 2):  
<http://www.youtube.com/watch?v=AvnqtxBeBj8>

### Machine Applique Techniques

Invisible Applique: <http://www.youtube.com/watch?v=ZFEuiP10IWw>

Applique Know-How: <http://www.youtube.com/watch?v=Vta9ZG5QE0E>

I would be thrilled to see any photos or images of a block you make from this pattern.

Email your block or project to me at [justquiltingaway@gmail.com](mailto:justquiltingaway@gmail.com)

Credits

Created By Marian Pena

Seams To Be Sew

<http://www.seamstobesew.com>

Image Used For Block From:

Primsy Doodles

<http://primsydoodledesigns.net/>

Electric Quilt Software

<http://www.electricquilt.com>

CopyRight © 2013 Seams To Be Sew by Marian Pena All Rights Reserved

This pattern whether sold or given away free of charge, is owned by Marian Pena. The user who downloads it is asked to create something for personal use or there own craft type items to sell of there own. In other words, when you create something with it, you are free to do what you like with it other than the terms listed in this copyright notice. As to the pattern itself, please do not share, sell, or give it away. This pattern is not allowed to be produced for mass distribution without permission of the artist and the creator  
Marian Pena.