

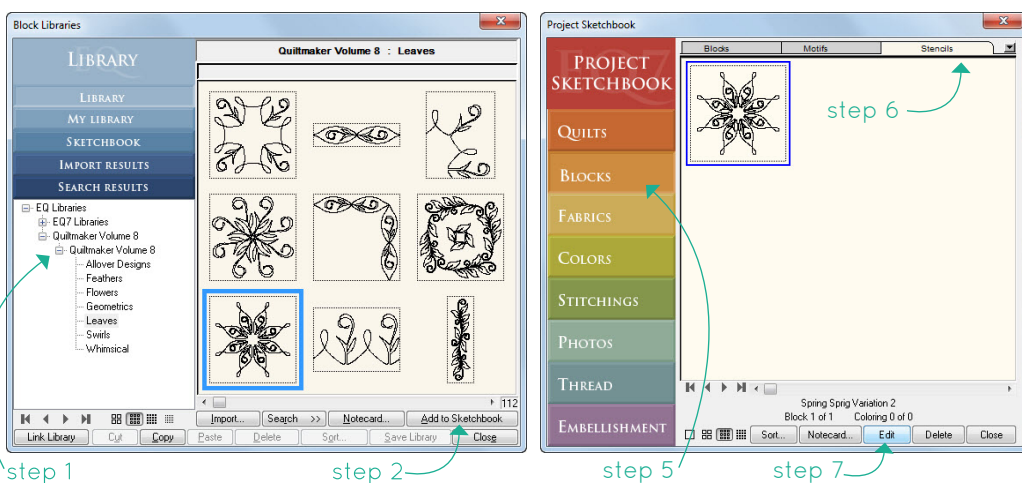
# Quilting in the hoop using EQStitch & Quiltmaker's Quilting Designs

from The Electric Quilt Company  
www.electricquilt.com

## FIND A QUILTING DESIGN

The designs included in the Quilting Designs volumes are all drawn on the Applique drawing board of the Block worktable. Let's find a design, then learn more about converting these into stitchable designs.

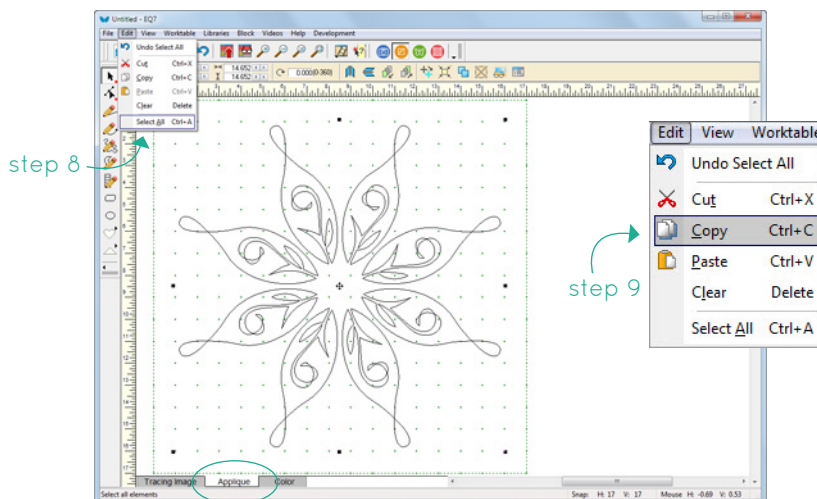
1. Find a design from the Quilting Designs collection in your **EQ Block Library**.
2. Add the design to the **Sketchbook**.
3. **Close** the Library.
4. Click the **View Sketchbook** button on the top menu bar.
5. Click the **Blocks** section on the left of the sketchbook.
6. Click the **Stencils** tab at the top of the Sketchbook window.
7. Select your design, then choose **Edit**. Your design is now on the Applique tab of the Block worktable.



## COPY THE BLOCK ON THE BLOCK WORKTABLE

Designs can't be digitized unless they are drawn on the Stitching worktable. Since the Block worktable and the Stitching worktable use the same drawing board (the Applique tab and the Artwork tab), we simply have to move our quilting design from the Block worktable to the Stitching worktable.

8. With the design on the worktable, choose **EDIT > Select All** from the top menu. The entire design will become selected.
9. Choose **EDIT > Copy** to save a copy of the design to your Windows Clipboard.



Select and copy the design on the Applique tab of the BLOCK worktable.

## PASTE ONTO STITCHING WORKTABLE

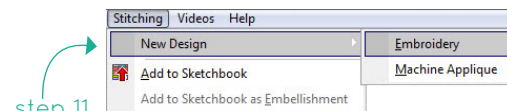
We've copied the block from the Block worktable. Now when we paste it onto the Stitching worktable, the "block" is now the artwork for your stitching design.

10. Click the **Work on Stitching** button on the Project toolbar. You are now on the Stitching worktable viewing the Artwork drawing board, which is the same as the Applique drawing board of the Block worktable.
11. Click **Stitching > New Design > Embroidery**.
12. Click **EDIT > Paste** to add the design to the worktable.
13. On the top Precision Bar, click the **Center** button to center your design. You may have to resize the design a bit to make it fit inside the hoop.

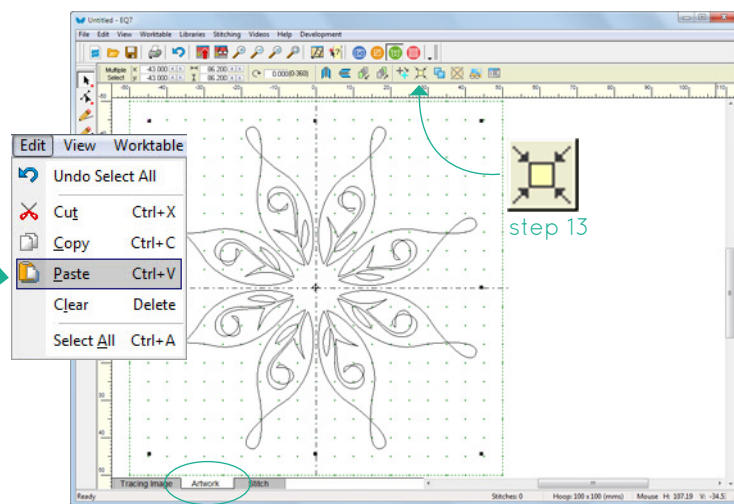
step 12



step 10



step 11



Paste design on the Artwork tab of STITCHING worktable.

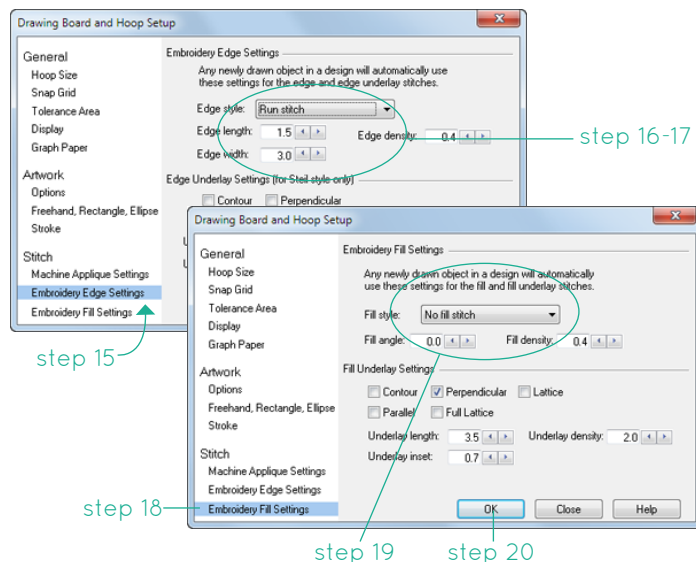
## DIGITIZE THE DESIGN

Now you need to add stitching. You'll save time by choosing your stitch style in the Drawing Board and Hoop Setup box before you click the Stitch tab. Once you click the Stitch tab, all lines/patches must be adjusted individually.

14. Click the **Drawing Board and Hoop Setup** button on the Precision Bar.
15. In the left column under *Stitch*, click **Embroidery Edge Settings**.
16. Change the *Edge style* to **Run stitch**.
17. Change the *Edge length* to **1.5**. (These settings are just suggestions, feel free to adjust to whichever settings you prefer.)
18. In the left column, click **Embroidery Fill Settings**.
19. Change *Fill style* to **No fill stitch**.
20. Click **OK**.
21. Click the **Stitch** tab at the bottom of the worktable.



step 14



step 16-17

step 15

step 18

step 19

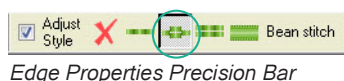
step 20

### TIP!

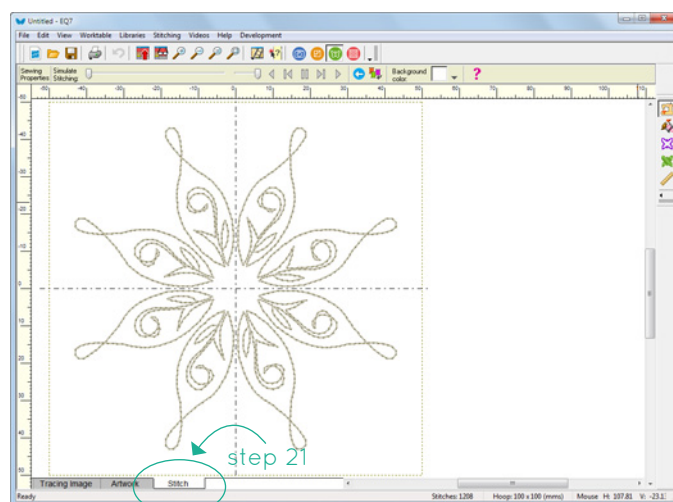
If you'd like to make adjustments, say maybe change the edge stitch to Bean instead, you'll need to use the **Set Edge Stitch** tool on the right toolbar. This will display the Edge Properties Precision Bar for additional adjustments. Each line/patch has to be clicked for the changes to be applied.



Set Edge Stitch



Edge Properties Precision Bar



step 21

## COLOR THE DESIGN

Use the Thread library to choose a color for your design.

22. Click the **Set Thread** tool on the right toolbar.
23. On the Precision Bar, click the **Spray Thread** button to color your whole design at once.
24. Choose a color in the Thread box, then click on the design.

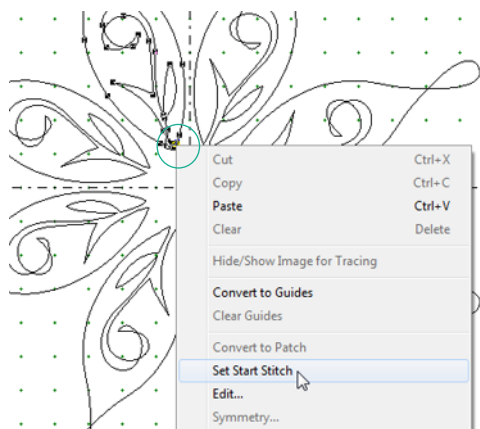
## ADJUST THE STITCH ORDER

It's VERY IMPORTANT that you simulate the stitching before you export the file for your machine. The Quilting Designs blocks were drawn on the Block worktable, which does not take into account any sort of stitch order. You may need to adjust your design so your machine doesn't have to jump all over while stitching.

25. Click the **Simulate Stitching** tool. Then click the **Play** button on the Precision Bar. Notice that your machine will have to jump around the hoop when stitching. Let's fix this.
26. Click the **Artwork** tab.
27. The design would stitch out more nicely if it stitched in a clockwise or counter-clockwise order. With the **Pick** tool, select the **A** section.
28. On the Precision Bar, click **Send to Back**.
29. Select the **B** section, then click **Send to Back**. Continue all the way around the design.
30. Click the **Stitch** tab and **Simulate Stitching** again.

### HINT!

Not only can you set the stitch order, but you can also set the start/stop point of each of the sections. Click the **Artwork** tab and select the **Shape** tool. Click on the design where you'd like the stitching to start. Right-click and choose **Set Start Stitch**. Do this for all the sections of your design, then Simulate the Stitching again.

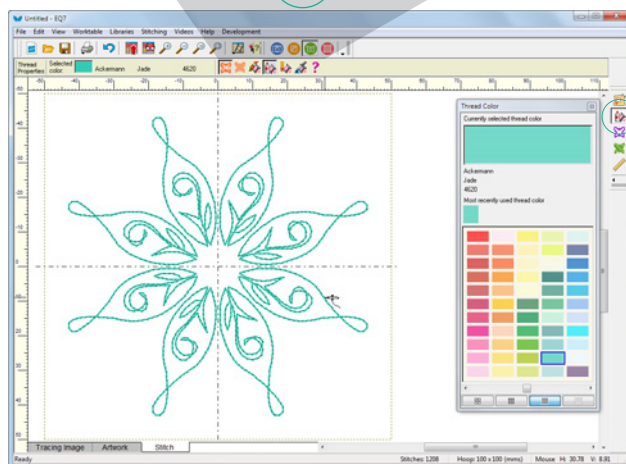


## EXPORT THE DESIGN

Once your design is just as you'd like, export for your machine!

31. Click **Add to Sketchbook** to save your design.
32. Click **Stitching > Export Stitching File**.
33. Name your design, choose your file type and location, then click **Save**.
34. A prompt may display asking to Sort Colors. Click **No** since we've already set our stitch order.
35. Your file has been written successfully. Click **OK**.

step 23

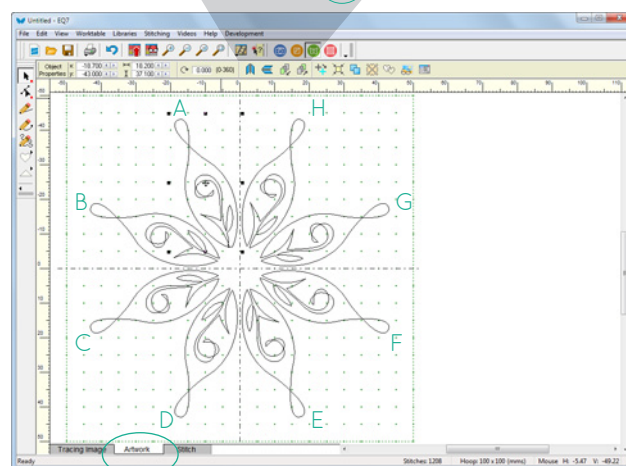


Color the design.

step 25



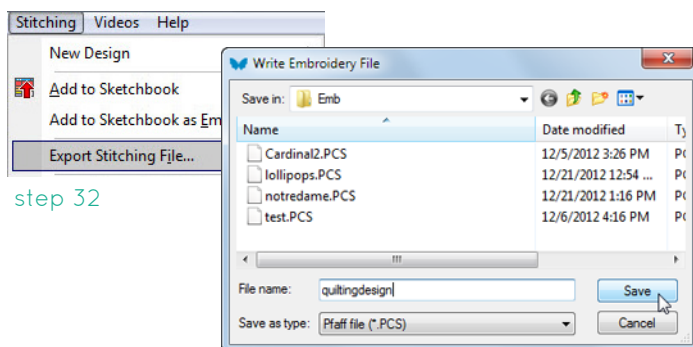
step 28



step 26

Select the A section, then click Send to Back. Continue counter-clockwise with the rest of the sections. This will force the design to stitch in a nicer order.

step 30



step 32

step 33

Export the file for your machine.