

# Creepy Cupcakes Treat Bag

A free project from My EQ Boutique using Angie Padilla's Creepy Cupcakes designs!

## Materials

Fat quarter for bag exterior  
Fat quarter for bag lining  
Fat quarter for bag handles and ruffle  
Assorted scraps for the cupcake appliqué  
Fusible web for the appliqué

## Cut Fabrics

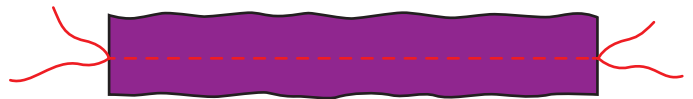
From the exterior fabric, cut two rectangles  
10" x 11.5".  
From the lining fabric, cut two rectangles  
10" x 11.5".  
From the handle fabric, cut two rectangles 4" x 14".  
From the ruffle fabric, cut one rectangle 2" x 14".

Seam allowances are 1/4", unless otherwise stated.

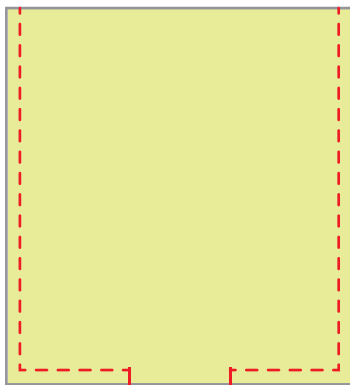


## Directions

- 1 Fuse and appliqué the cupcake pieces to the front panel of the bag.
- 2 To make the ruffle, fold the ruffle fabric in half lengthwise, right sides together. Stitch a 1/4 seam along the raw edges and turn the tube right side out.
- 3 Center the seam on the back side of the rectangle and press.
- 4 Increase your sewing machine's stitch length to the longest length available and stitch a seam down the center of the rectangle. These stitches will be removed later, so use a contrasting thread that's easy to see.
- 5 Make the ruffle by holding the bobbin thread taut while gathering the fabric. Adjust the ruffle until it is the same width as the front panel of the bag.
- 6 Pin the ruffle to the front panel of the bag, approximately 2" from the top. Stitch down the center of the ruffle. Remove the gathering stitches.
- 7 Place the two exterior panels right sides together and stitch along the sides and bottom.

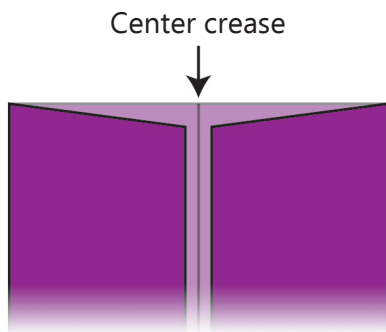


- 8** Place the two lining panels right sides together and stitch along the sides and bottom, but leave a 4" opening along the bottom for turning later.



Leave opening for turning

- 9** For the handles, press the rectangle in half lengthwise. Open the rectangle and fold the long raw edges in to meet the center crease you just made. Press.



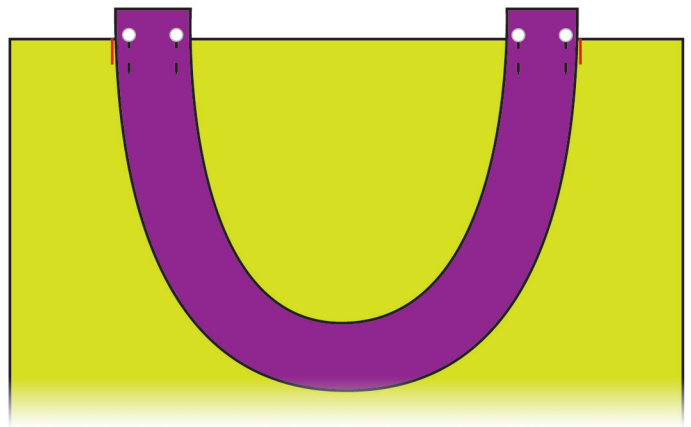
- 10** Re-fold the rectangle along the center crease and press again. This creates a handle that is four layers of fabric.

- 11** Top stitch an 1/8" seam along both long edges of the handle.

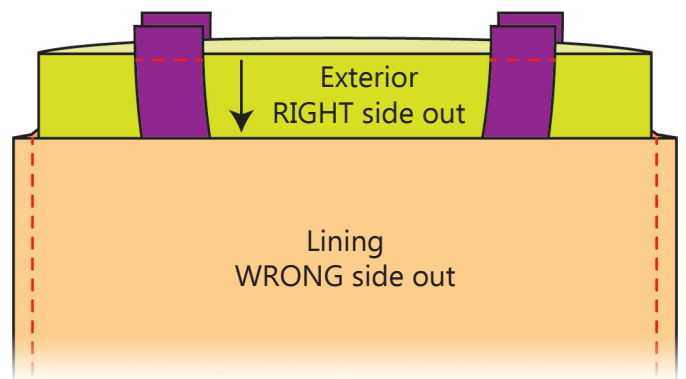
- 12** Repeat steps 9-11 for the second handle.

- 13** Turn the bag exterior right side out. On both the front and back panels, mark 2" in from each side.

- 14** Pin the handles in place on the bag exterior, lining up the outer edges of the handles with the marks you made in step 13. The handles should extend 1/2" above the top of the edge of the bag. Baste the handles in place using an 1/8" seam allowance.



- 15** Tuck the bag exterior (RIGHT side out) into the bag lining (WRONG side out), aligning the top edges and making sure the handles are between the two layers. Pin in place.



- 16** Stitch around the top edge.

- 17** Turn the bag right side out through the opening in the lining.

- 18** Hand stitch the opening closed.

- 19** Top stitch an 1/8" seam around the top edge of the bag, for a finished look.

- 20** Fill your finished bag with treats!

